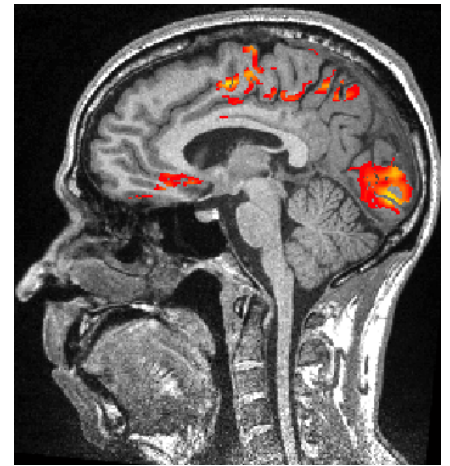


Have you had a recent head injury?



You may be eligible to participate in a research study.

Researchers at the Smith-Kettlewell Brain Imaging Center are investigating the effects of **concussion or blows to the head** on **light sensitivity**.

- Brain activity will be measured while you view colored displays
- If you qualify, you will be paid up to \$30 per hour
- Transportation and parking reimbursement available

Want to learn more? Please contact:

Kris Mineff, M.S. **OR** Christopher Tyler, Ph.D., D.Sc. **OR** Lora Likova, Ph.D.
(415) 345-2060 (415) 345-2105 (415) 345-2066
mineff@ski.org cwt@ski.org lora@ski.org

2318 Fillmore Street
San Francisco, CA 94115
Between Clay and Washington
www.ski.org



THE SMITH-KETTLEWELL
EYE RESEARCH INSTITUTE